

Heatherwick Studio

Azabudai Hills

Tokyo, Japan

Shanghai West Bund Orbit

Shanghai, China

1000 Trees

Shanghai, China

NTU Learning Hub

Singapore

EDEN Singapore Apartments

Singapore



Landmarks featuring **AALBORG WHITE**®

AZABUDAI HILLS

Led by Mori Building, this redevelopment transformed a 2.4-hectare district in central Tokyo over 30 years into a mixed-use community integrating residential, office, retail, dining, cultural, educational, and public spaces, along with two temples. In collaboration with over 300 residents and businesses, more than 90% of original tenants returned.



AALBORG WHITE®



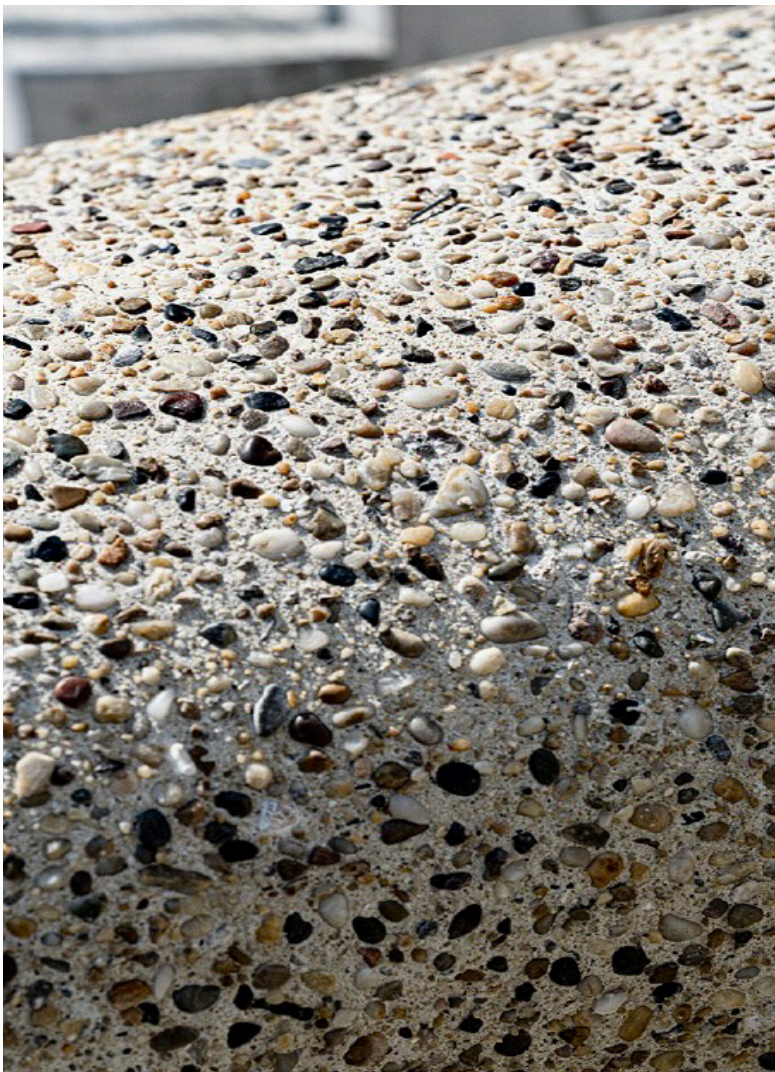
Conceived as a “Modern Urban Village,” Azabudai Hills is guided by Green and Wellness, blending density with human-centered spaces. The low-rise retail zone was designed by Heatherwick Studio. As a Transit-Oriented Development (TOD), it promotes walking and public transport, reducing car dependency and environmental impact.

The site’s complex topography was resolved through a terraced layout, creating seamless connections with the surroundings. Over 35 years, the project coordinated more than 300 landowners while respecting heritage and community.



The grid-like “Net Frame” façade uses prefabricated GRC to integrate architecture and landscape. Exposed-aggregate panels offer natural texture, curved geometry, and tactile quality.

A total of 13,000 m² of GRC elements were produced using Aalborg White cement with 4–8 mm aggregates. Double-curved panels achieved tolerances within 3 mm, with compressive strength above 60 MPa and flexural strength above 25 MPa. White cement ensures consistent color and enhances aggregate tones, creating a soft beige appearance.





AALBORG WHITE®



Azabudai Hills is more than a building, it is a work of art. The versatility of architecture concrete materials enabled the design team to refine every detail precisely while echoing the textures of the surrounding urban fabric.

Project Information:

Year: 2023

Location: Tokyo, Japan

AALBORG WHITE® cement Application: GRC elements

Architects: Heatherwick Studio

GRC Façade: Huiliao Group

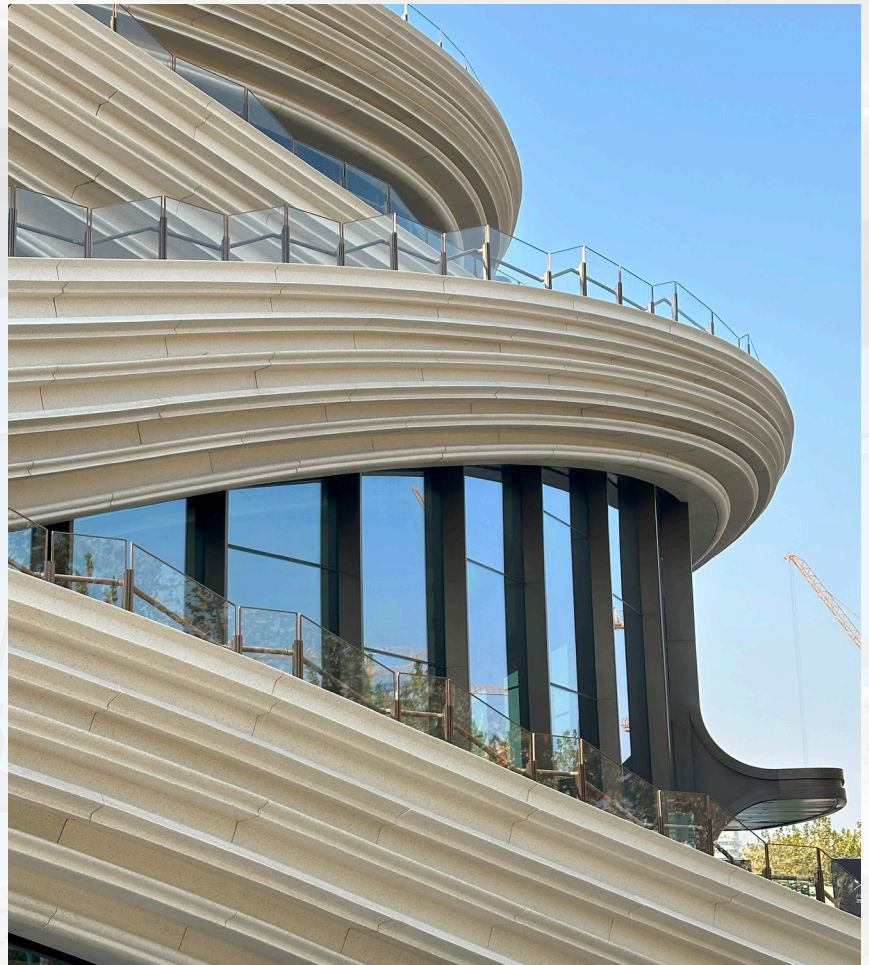
SHANGHAI WEST BUND ORBIT

Situated on the Xuhui Riverside in Shanghai, “The Orbit” is a public art building designed by Thomas Heatherwick, marking his fourth project in the city. Its GRC façade, resembling dancing ribbons, incorporates arc-shaped stairs, bridges, and terraces, creating an immersive waterfront experience.





AALBORG WHITE®



Inspired by waves, ribbons, and the “moon bridge” of traditional Chinese gardens, the flowing structure wraps the building, linking pathways into a continuous form shaped by movement. The envelope combines a zigzag glass curtain wall with GRC ribbons, supported by steel brackets without beams to enhance transparency. With a 19.10-meter diameter and 4,500 m² above-ground area, ramps, railings, and planted zones are seamlessly integrated.



AALBORG WHITE®

Material testing included metal, ceramics, and GRC. GRC made with Aalborg White cement, produced by Jiangsu Hui Quan New Material, was selected for its ability to achieve smooth curves and terrazzo-like surfaces with mother-of-pearl aggregates. The light beige ribbons take on a golden tone in sunlight, with white cement ensuring color consistency, durability, and resistance to pollution.



AALBORG WHITE®



Using BIM and parametric tools, mold use increased by over 600%, reducing required mold area from 2,000 m² to 300 m². As noted by Architect Neil Hubbard, the Orbit is meant to be explored and experienced. Instead of simply enclosing a gallery within an ornamental façade, the 'Orbit' will come alive through the people who visit it.

Project Information:

Year: 2023

Location: Shanghai, China

AALBORG WHITE® cement Application: GRC facade

Architects: Heatherwick Studio

GRC Façade: Jiangsu Hui Quan New Material

1000 TREES

1000 TREES, a collaboration between Thomas Heatherwick and Tian'an Group, is located along the Suzhou Creek and stands out as a uniquely sculptural shopping center in Shanghai. The project has a total construction area of approximately 110,000 m², with a 6.5-hectare, 9-story commercial space above ground.





AALBORG WHITE®



This highly recognizable building opens a fresh exploration of diverse aesthetic perspectives. Featuring 400 steps, 1,000 trees, and hundreds of staggered terraces, the massive structure transforms into an urban sky garden, offering an immersive natural experience.

Concrete plays a central role in articulating design intent. The structure is supported by over 140 cast-in-situ concrete cantilever columns, each topped with a concrete planter. The cast-in-situ planters form an integrated, tree-like system that unifies structure and landscape while reinforcing the building's sculptural expression.





AALBORG WHITE®



Within the mall, nearly 20 vertically expressed columns define the interior space. These are formed from GRC precast elements, using Aalborg White cement and produced by Sandarli. Their subtly undulating, rock-like surfaces demonstrate a high degree of manufacturing precision, contributing to a coherent material language and a refined spatial experience.

Project Information:

Year: 2021

Location: Shanghai, China

AALBORG WHITE® cement Application: Interior GRC pillars

Architects: Heatherwick Studio

GRC Pillars : Shanghai Sandarli

NTU LEARNING HUB

The eight-storey Learning Hub is conceived as a social and academic condenser, where informal encounters among students can lead to new ideas and collaborations. Comprising 12 towers arranged around a naturally ventilated central atrium, the building creates a porous, campus-like environment. Its 56 corner-less tutorial rooms and open terraces encourage flexible learning, interaction, and moments of exchange.

The façade is defined by over 1,200 uniquely curved GRC panels, forming a continuous and tactile architectural skin. Produced using reusable silicone moulds, the panels feature horizontal ribbing that enhances curvature and shadow. The use of Aalborg White Cement, combined with selected aggregates, achieves a refined, stone-like surface with consistent colour and rich texture at scale.

Click to explore more about the [project](#).

Project Information:

Year: 2015

Location: Singapore

AALBORG WHITE® cement Application: GRC facade

Architects: Heatherwick Studio

EDEN SINGAPORE APARTMENTS

EDEN Singapore residential tower is a 20-storey, 104.5-metre residential tower in Singapore's Newton district by Heatherwick Studio, conceived as a counterpoint to ubiquitous glass-and-steel high-rises. The project stacks a series of homes vertically, each paired with a generous private garden, forming a distinctive "vertical garden" on the skyline.

The building's defining feature is its oversized, shell-like balconies, which alternate to create double-height outdoor spaces. These precast concrete balconies are made with Aalborg White cement, giving them a refined, polished appearance that contrasts with the textured, earth-toned structural concrete panels. The concrete elements are designed with a three-dimensional texture portraying the city's topography. Conceived as giant planters accommodating soil and drainage, the balconies support over 20 plant species and evoke organic growth climbing the façade. As Thomas Heatherwick noted, the intent was to transform balconies into generous, inviting spaces that encourage everyday outdoor living.

Click to explore more about the [project](#).

Project Information:

Year: 2020

Location: Singapore

AALBORG WHITE® cement Application: GRC balcony

Architects: Heatherwick Studio